

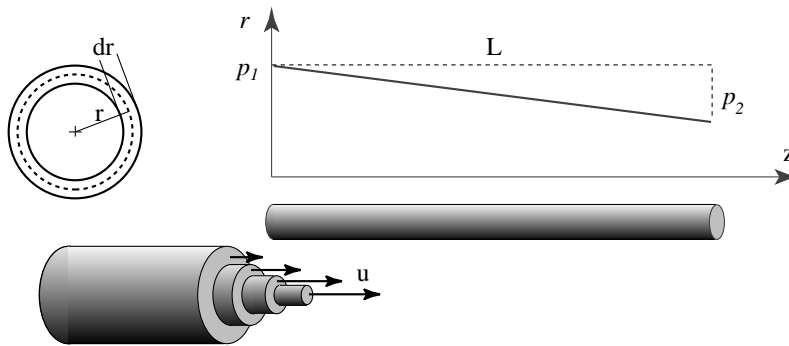
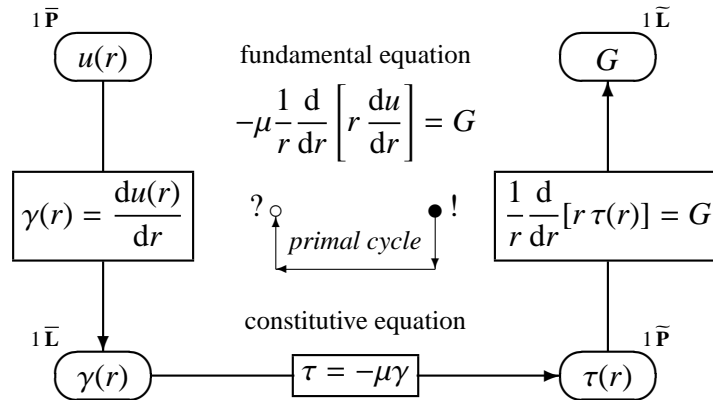
Viscous fluid in a pipe: Poiseuille law

fluid: *viscous*

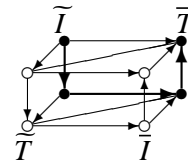
flow: *steady, incompressible, laminar in a straight, horizontal pipe*

configuration variables
inner space orientation
primal complex

source variables
outer space orientation
dual complex



u velocity G pressure gradient = $\frac{p_1 - p_2}{L}$
 γ shear velocity τ shear stress
 μ viscosity coefficient



Ref: Paterson, p. 143
 Ref: Perucca, v.I, p. 441
 FLd6-3; <http://discretephysics.dica.units.it>